

Wendy's  
**KIDS'  
MEAL**

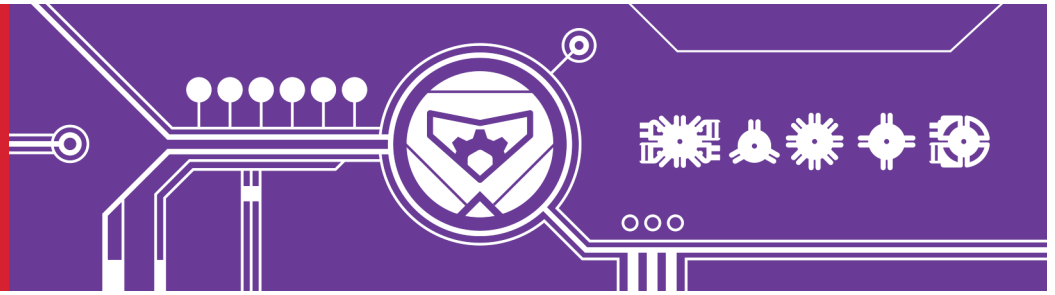
SMARTLINKS®  
**BIGBOTS**



# ACTIVITIES FOR HOME



**CRAFT SAFETY:** Adult supervision is required for any arts & crafts project. Observe children closely and intervene as needed to prevent potential safety problems and ensure appropriate use of materials. Some craft items are potential choking hazards for young children. Avoid use of small parts with children ages 3 or younger. Read all manufacturers' warnings before using arts & crafts supplies.



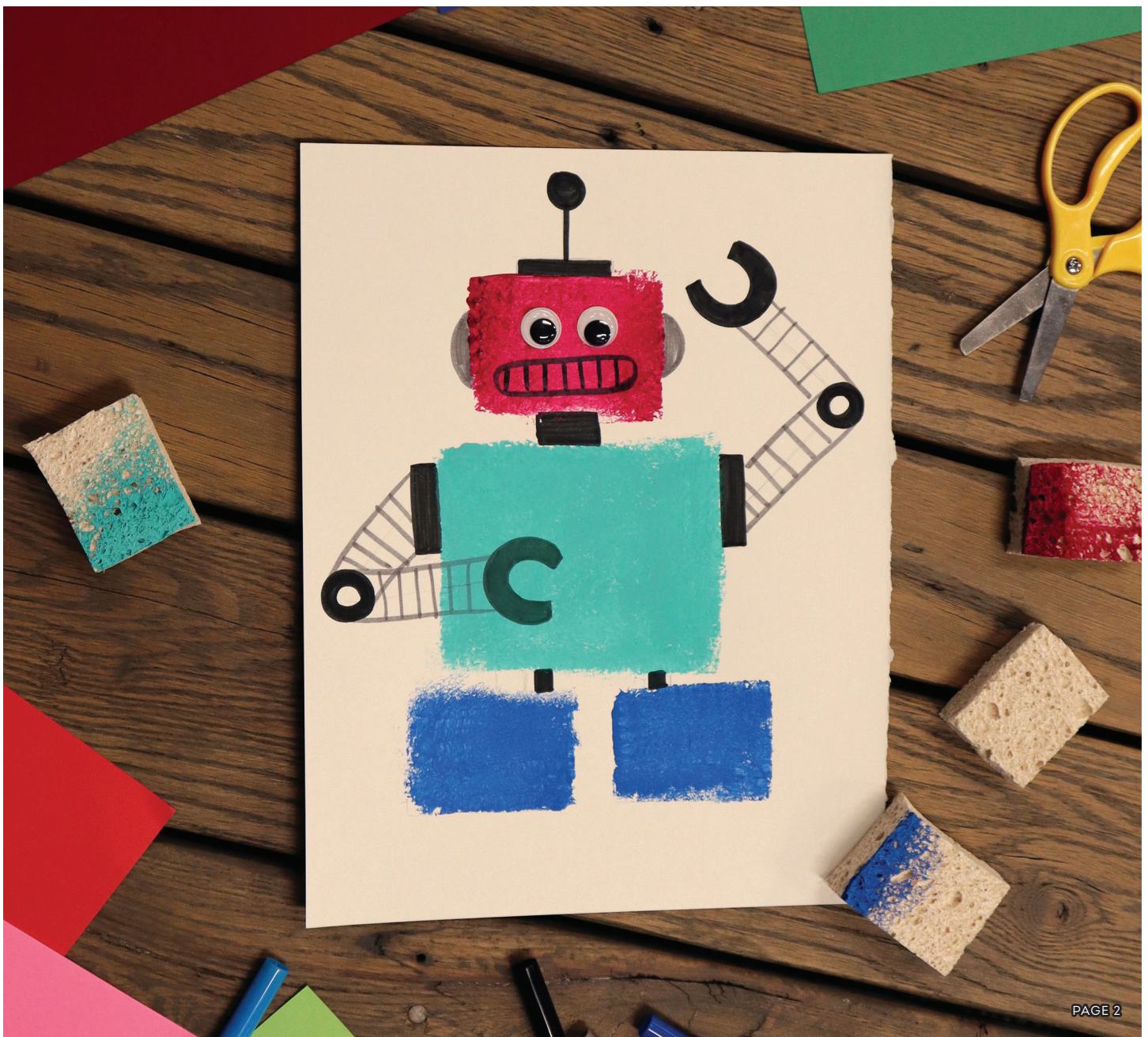
# ROBOT SPONGE PAINTING

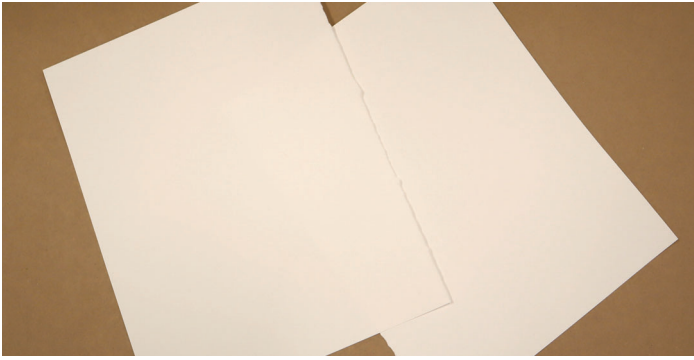
## WHAT YOU'LL NEED:

- Safety scissors
- Non-toxic paint
- Construction paper
- Non-toxic markers
- Non-toxic glue
- Googly eyes
- Sponge



**CAUTION:** The cutting edges of scissors are sharp, and care should be taken whenever cutting or handling. Adult use of safety scissors recommended for children 3 years or younger. Avoid use of sponges with children 3 years old and younger.





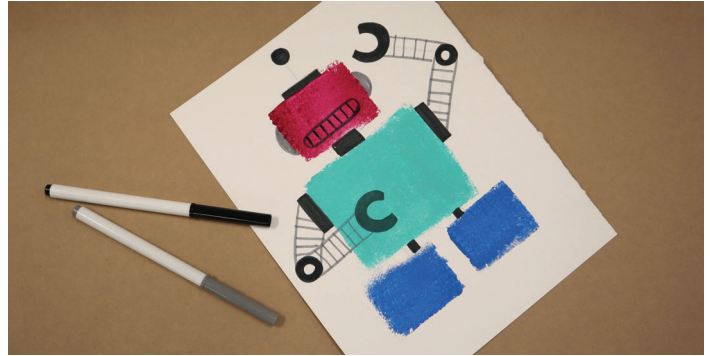
1. Use white construction paper for your sponge painting.



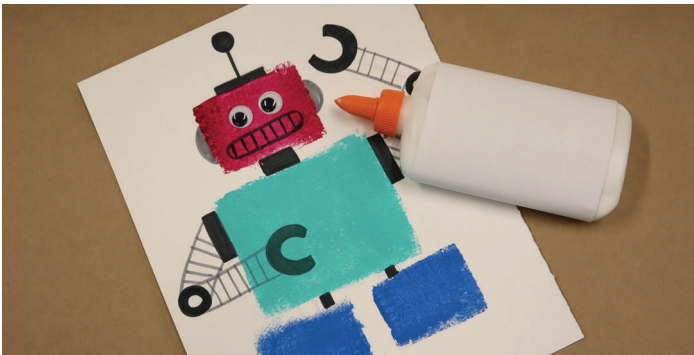
2. Use scissors to cut a full sized sponge into smaller pieces.



3. Use the smaller pieces of sponge to paint the different body parts of your robot.



4. Use markers to add limbs, accents and facial features to your robot.



5. Glue on the googly eyes to complete your robot's face.



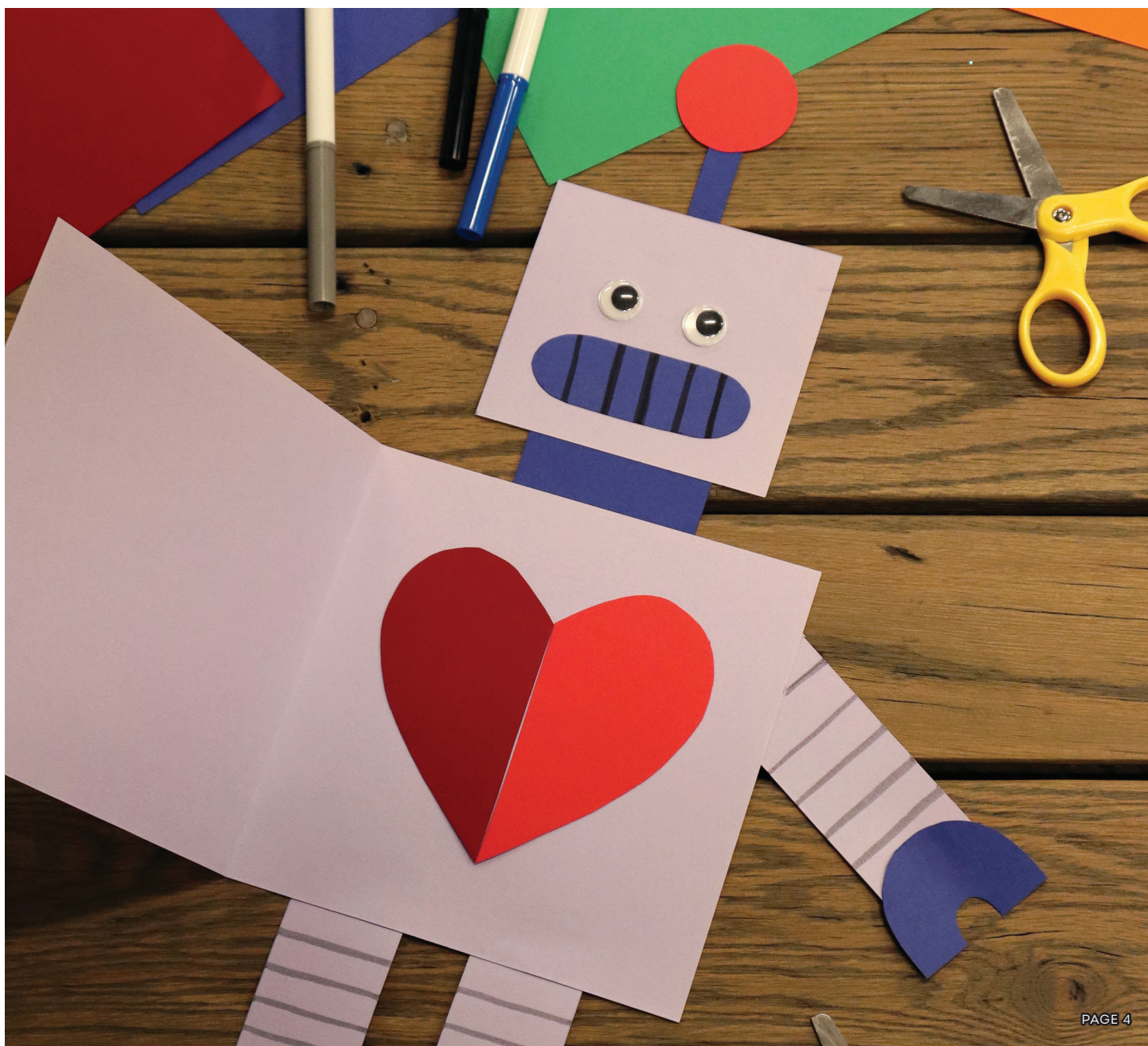
# ROBOT GREETING CARD CRAFT

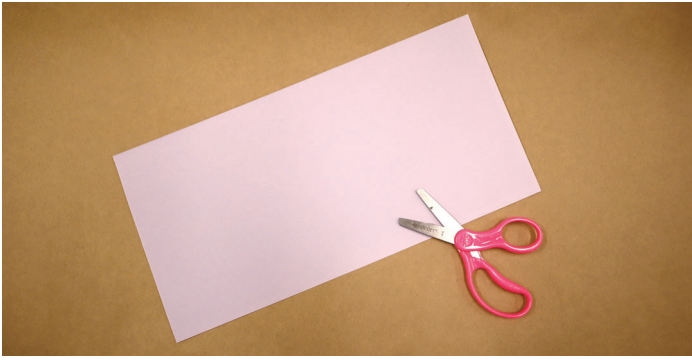
## WHAT YOU'LL NEED:

- Safety scissors
- Construction paper
- Googly eyes
- Non-toxic markers
- Non-toxic glue
- Ruler

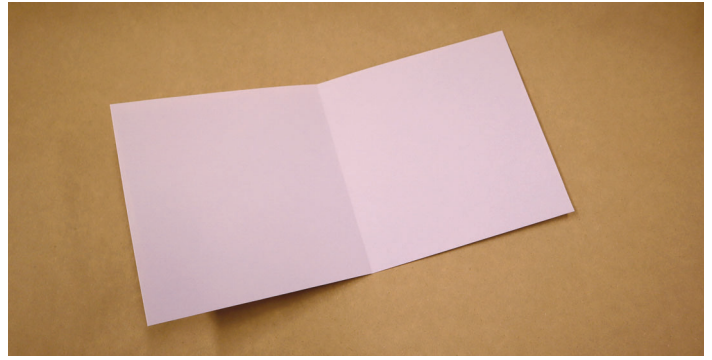


**CAUTION:** The cutting edges of scissors are sharp, and care should be taken whenever cutting or handling. Adult use of safety scissors recommended for children 3 years or younger.





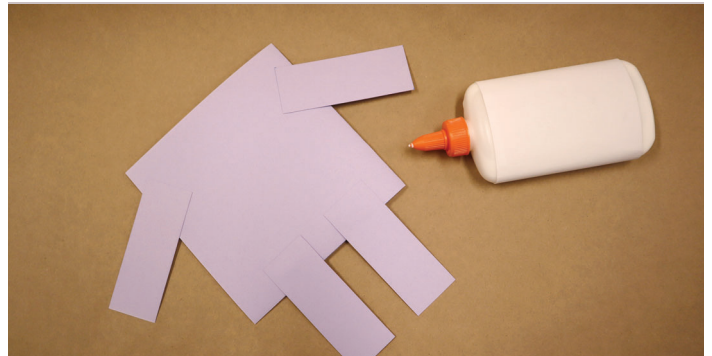
1. Cut out a 12 x 6-inch rectangle from construction paper.



2. Fold the rectangular piece of construction paper in half to create a card.



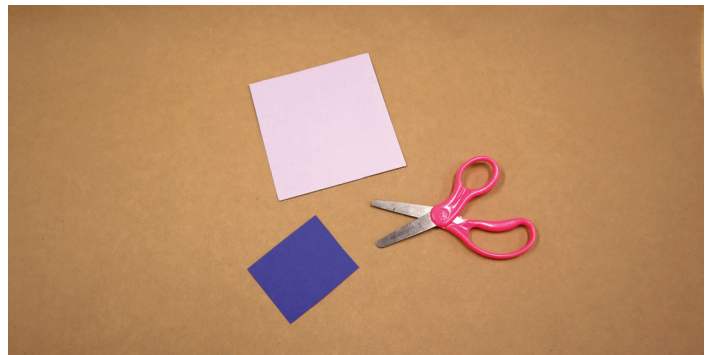
3. Cut out four 1.5 x 3-inch rectangles for the arms and legs of the robot.



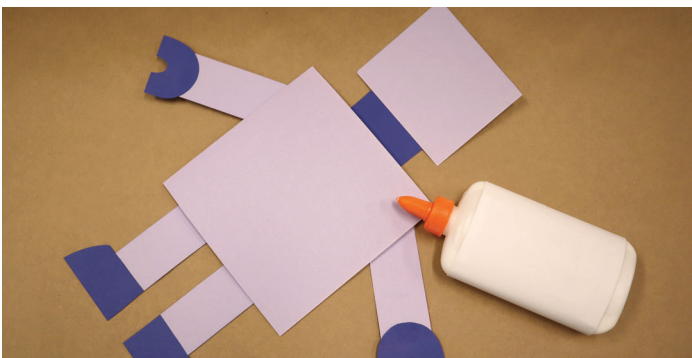
4. Glue the pieces of construction paper to the back of the card.



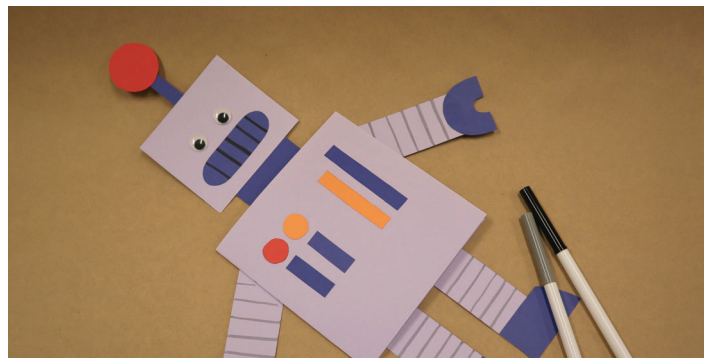
5. Use a darker color of construction paper to cut out feet and hands for your robot.



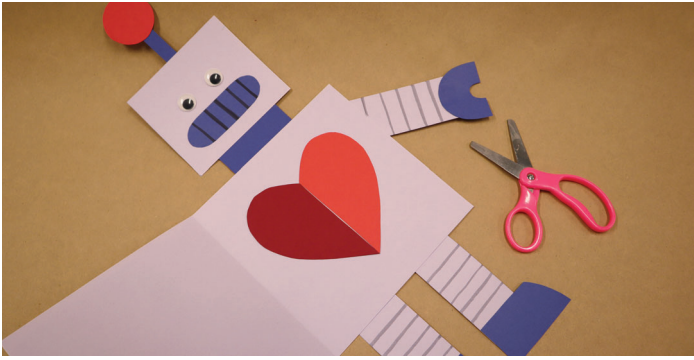
6. Cut out a 4 x 3-inch piece of construction paper for the head, and a 2 x 1.5-inch piece for the neck.



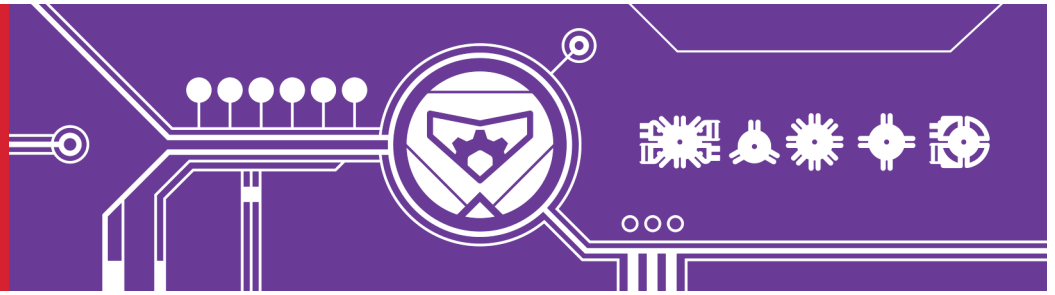
7. Glue all the pieces to the card body.



8. Decorate your robot with construction paper accents, googly eyes and markers.



9. Open the card portion of your robot and write a message inside or decorate it with a paper cut out heart.



## ROBOT CLOTHESPIN PAPER CRAFT

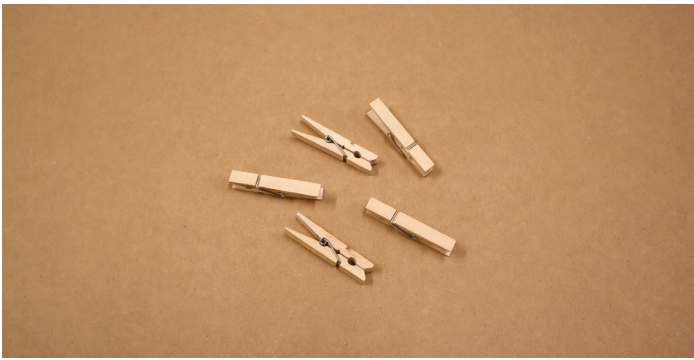
### WHAT YOU'LL NEED:

- Safety scissors
- Construction paper
- Googly eyes
- Clothespins
- Paint brushes
- Non-toxic markers
- Non-toxic paint
- Non-toxic glue

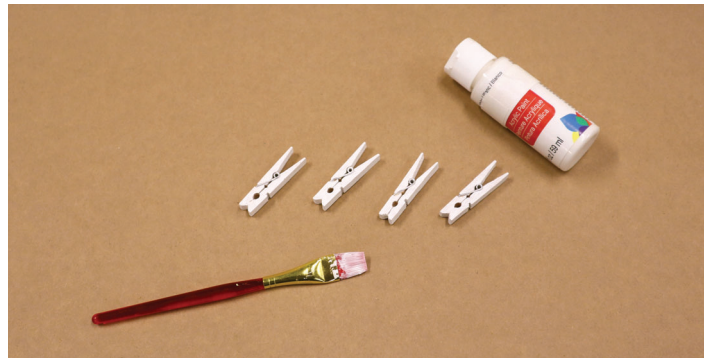


**CAUTION:** The cutting edges of scissors are sharp, and care should be taken whenever cutting or handling. Adult use of safety scissors recommended for children 3 years or younger.





1. Use medium-sized wooden clothespins.



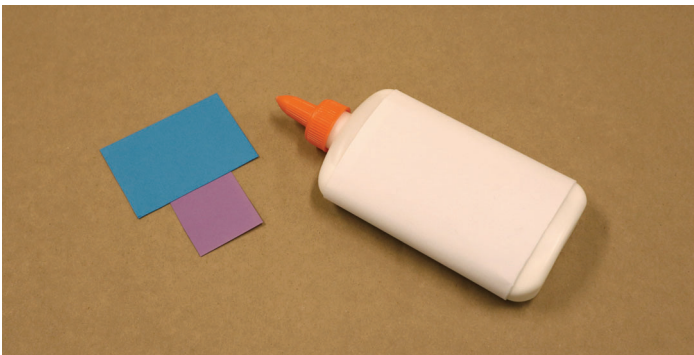
2. Paint clothespins with white paint. Let the paint dry completely.



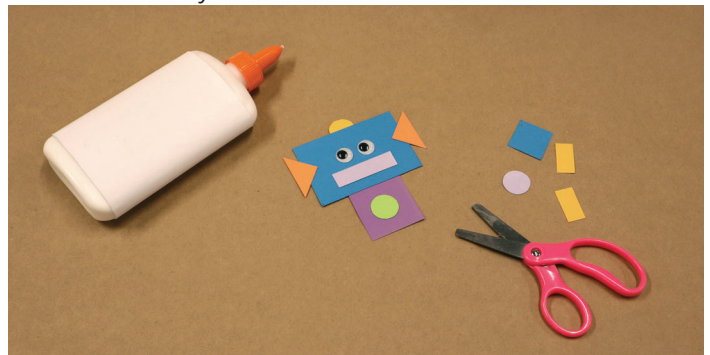
3. Add a second coat of silver paint.



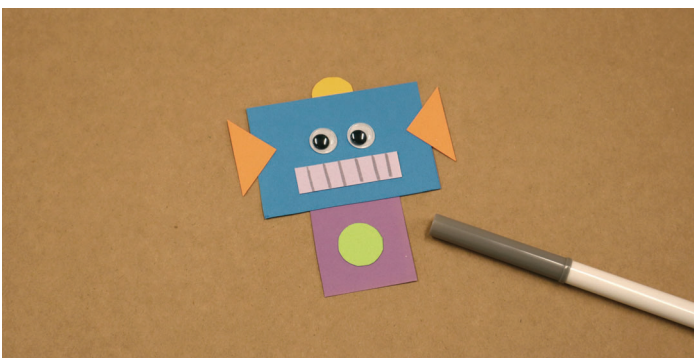
4. Use construction paper to cut out a 2.5 x 1.5-inch rectangle for the head, and a 2 x 1-inch rectangle for the body.



5. Glue the 2 pieces of construction paper together.



6. Cut out small accents and use googly eyes to decorate your robot.



7. Use a marker to add more details to your robot's face and body.



8. When the paint on the clothespins has dried, attach them to the robot body to create limbs.